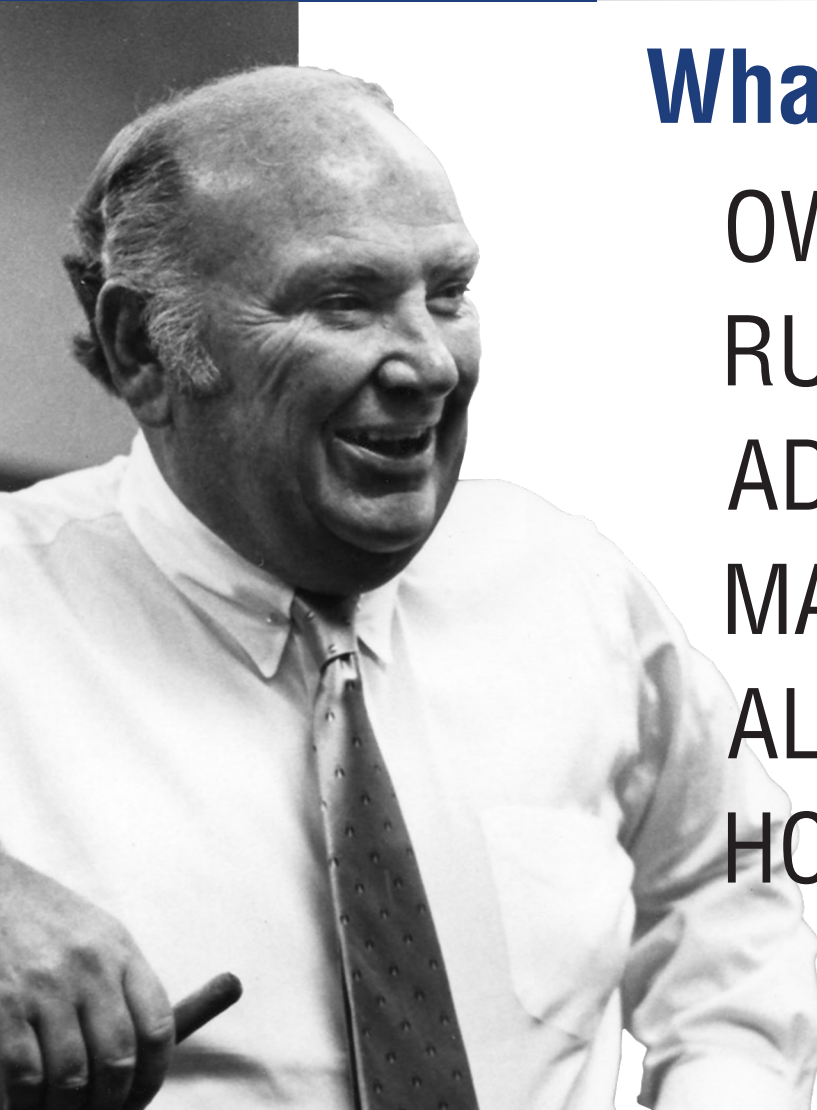


The image features a large, black, industrial sheave in the foreground, which is a pulley with multiple V-shaped grooves on its outer rim. The sheave is positioned diagonally, with its center towards the bottom right. The background is a collage of industrial scenes. On the left, there is a photograph of a complex industrial structure with blue steel beams and yellow safety railings, possibly a conveyor system or a large storage tank. On the right, there is a photograph of an offshore oil platform with yellow structural elements and white cylindrical tanks, situated in the ocean under a blue sky. The overall color scheme is dominated by blue and yellow, with the black sheave providing a strong contrast.

Martin **Sheaves**

HI-CAP® WEDGE, CONVENTIONAL,
VARIABLE PITCH, FRACTIONAL HORSEPOWER
AND MADE-TO-ORDER



What would Joe do?

OWN your own territory and
take care of our customers

RUN your facility and take
care of our people

ADD something to
the ballgame

MAKE SURE you have your
priorities right

ALWAYS back to the basics – quality,
service, low-cost producer

HOW to get big and
stay small

A handwritten signature in blue ink that reads "Joe Martin". The signature is stylized and fluid.

Established in 1951 in Arlington, Texas, Martin has evolved into a global powerhouse with 30+ strategically located sites. Our unwavering commitment to excellence in power transmission and material handling positions us as a trusted partner globally. At Martin, we offer more than products; we provide precision, personalized service, combining global capability with local care. Experience the Martin difference, where our dedication to quality sets us apart.

Success in Business, Martin's Philosophy:

Success at Martin requires a strategic mindset — knowing customers, taking ownership, building trust, and cultivating an owner's mentality. Effective leadership involves personal responsibility, positive work culture, visibility, and effective communication. Unlocking success demands creativity, innovation, and resisting the status quo. Aligning priorities with a greater purpose ensures contributions lead to organizational success. Martin emphasizes basics — quality, service, and low-cost production — for streamlined and maximized efforts.

"Get Big, Stay Small" Strategy:

Martin advises strategic business expansion, discovering scalable avenues while preserving core qualities. Maintaining agility and adaptability in the dynamic market landscape is crucial. In a world full of choices, Martin's commitment to prioritizing personalized service and connections with customers sets us apart from the competition.

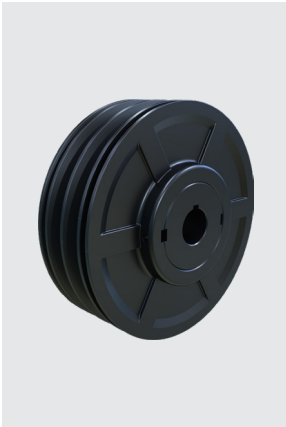
AVAILABLE IN STOCK

**HIGH CAPACITY**

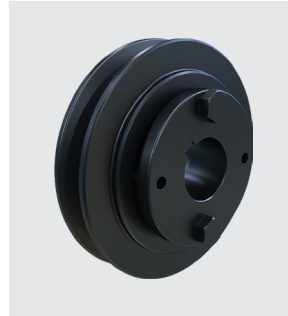
- Stocked for 3V, 5V & 8V belts
- Available in 1 to 12 groove configurations
- QD, MST® or Taper Bushed

**CONVENTIONAL**

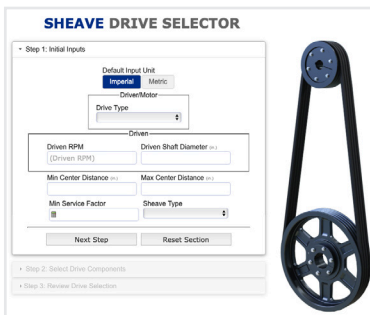
- Stocked for A, B, C & D belts
- A/B combination sheaves are grooved to run A-Section or B-Section V-belts
- Available in 1 to 12 groove configurations
- QD, MST® or Taper Bushed

**VP VARIABLE PITCH**

- Single and double groove designs
- Full range of popular bore sizes including keyway and setscrew
- Precision machined grooves
- Stationary adjustable speed sheaves
- Positive locking system

**FHP FRACTIONAL HORSEPOWER**

- Single and double groove designs
- Available bored-to-size and MST® bushed
- Precision machined grooves

**ONLINE SHEAVE DRIVE SELECTOR TOOL**

The Martin Sheave Drive Selector online tool simplifies the process of finding the right product for you. Simply input your drive specifications, and we'll guide you to the perfect selection. Visit martinsprocket.com or scan the QR code to explore this and other drive selector tools available.



MADE-TO-ORDER

**SIZES**

- Up to 196" in diameter
- Up to 10,000 lbs
- Up to 30" face width

MATERIALS

- Cast Iron
- Ductile
- Carbon steel
- Stainless steel
- Aluminum
- Plastic
- Non-metallic

SPECIALITY

- Poly V Sheaves
- E-Section Conventional Sheaves
- Idler Wheels
- Flat Face Pulleys
- Fly Wheels
- Wire Rope Sheaves
- Crusher Duty
- Deep Groove

MARTIN FOUNDRY

Operating its own foundry enables Martin to provide its customers with quality assurance, quick lead times, and application engineering assistance on cast and ductile iron parts.

With an upper range of 96" in diameter and 10,000 pounds, our own pattern shop, and streamlined access to secondary machining, Martin's comprehensive capabilities serve a broad spectrum of industrial uses.



CNC MACHINING OF GROOVES

Smooth operation and longer life of sheave and belt. Consistent manufacturing process that extend banded belt life.

Scan QR code to watch video:
Martin Capabilities: V-Belt Sheaves



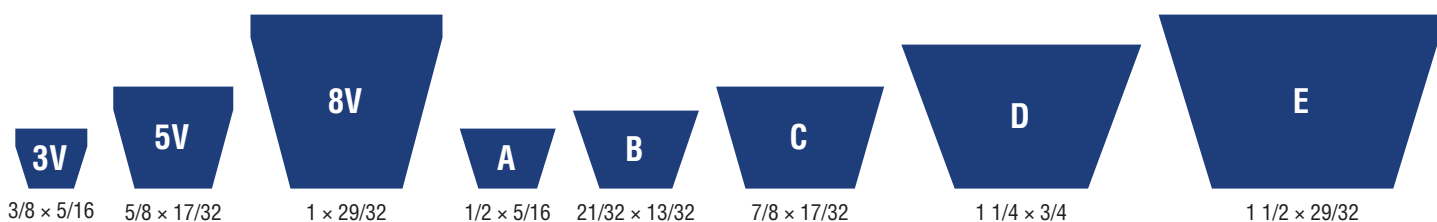
GENERAL BALANCING GUIDELINES

- **6,501 FPM and over** for ductile iron, steel or special materials, dynamic balance.
- **6,500 FPM and less** for cast iron, static balance.

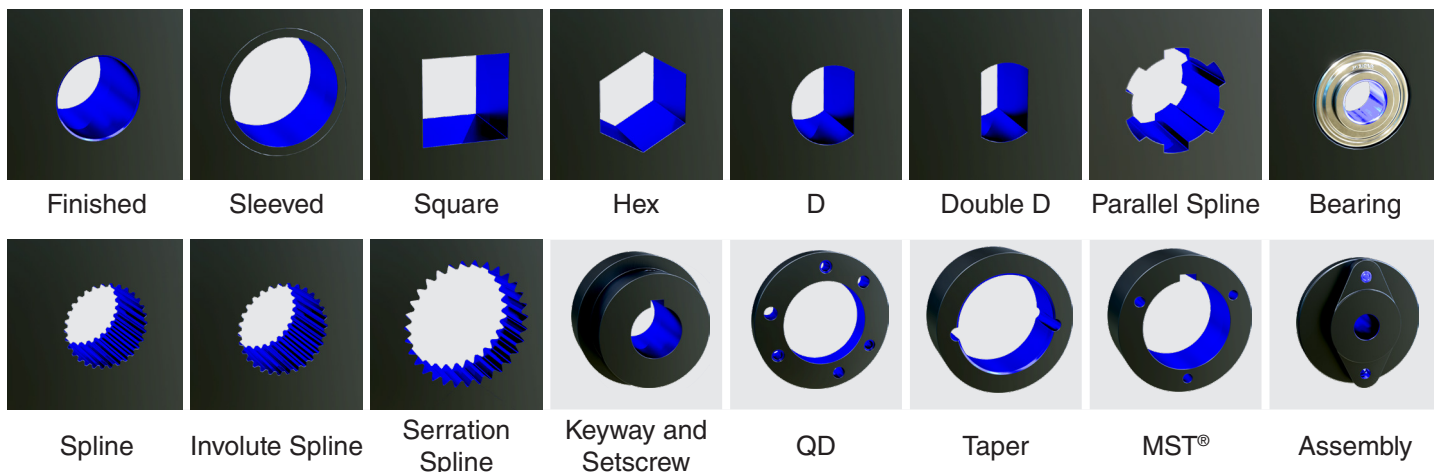
Scan QR code to watch video:
The Importance of Balancing Sheaves



BELT CROSS SECTION



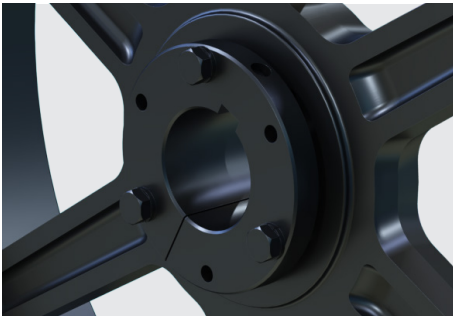
AVAILABLE CUSTOM BORE OPTIONS



BUSHINGS

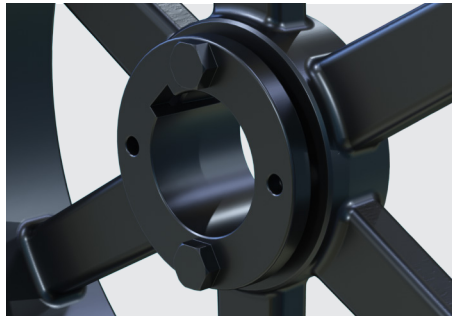
QUICK DETACHABLE (QD)

- Offers faster replacement.
- Single split through both the barrel and flange.
- No damage to shaft upon removal.
- Compatible with both conventional and reverse mounting.



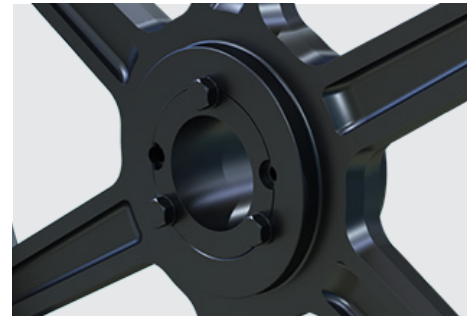
MARTIN SPLIT TAPER (MST®)

- Keyed to both shaft and hub to aid in "blind" installation.
- Solid flange with a double split through the barrel.
- The taper and hub key provide clamping on the shaft yielding higher torque capacity.

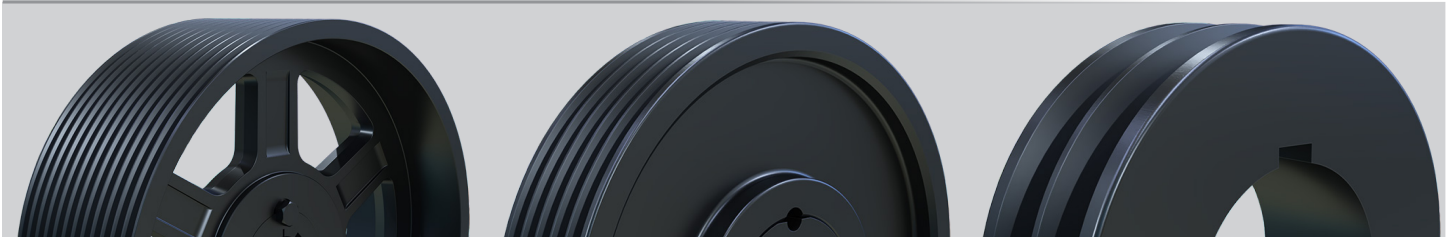


TAPER BUSHINGS (TB)

- Flush-mount for smaller equipment footprint.
- Single split through the barrel while the screws are used to tighten it to the shaft.
- There is no damage to the shaft upon removal.



CONSTRUCTION



SPOKED

- Larger outside diameter can be lighter in weight
- Easier to install and transport
- More robust design versus competitors for equivalent size
- 6,500 FPM-16,500 FPM

WEB

- Absorbs shock load during operation
- Allows for homogeneous stress distribution
- Reduced stress points
- 6,500 FPM-16,500 FPM

SOLID

- Offers highest speed capabilities
- Uniform weight distribution
- Compact design
- 7,500 FPM-20,000 FPM

QUICK MAINTENANCE GUIDE

Sheaves should be checked for wear every time you change a belt!

Indications of sheave wear include:

- Belts are turning over
- Belts wear out faster than normal
- Belts are "bottoming" out
- Belt dressing is used to quiet drive (not enough tension or worn grooves)
- Belts appear to be "mismatched"

If wear is present, replace them with Martin sheaves.



FREE
Sheave
Gauges
available at
your local
Martin Branch.



Scan QR code to go:
Maintenance & Troubleshooting Guide

POWERING INDUSTRIES SINCE 1951

Unlock the pinnacle of industrial excellence with Martin, your trusted partner in custom sheave engineering. For over seven decades, we've been at the forefront of innovation, crafting bespoke solutions that stand the test of time.

Elevate your industrial experience with Martin – where precision meets performance, and innovation meets reliability. Unleash the power of custom sheaves designed to propel your industry forward. Choose Martin, choose excellence.



UNMATCHED INVENTORY

With the largest power transmission stock in North America, find the perfect fit for your needs, always exceeding expectations.

TAILORED TO PERFECTION

Crafting made-to-order sheaves for unique industrial needs. Diverse materials, shaft options, and assemblies bring your vision to life.

QUALITY ASSURED

Backed by a solid one-year warranty*, Martin ensures top-tier reliability and durability in every product.

RAPID RESPONSE, SWIFT SOLUTIONS

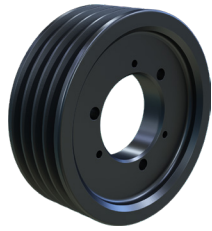
Quick alterations and manufacturing across locations guarantee the industry's fastest lead times for made-to-order products. Your deadlines, our priority.

A PERSONAL TOUCH TO EVERY ORDER

Beyond products, Martin is your dedicated partner in success. Experience precision, performance, and reliability. Choose Martin, choose excellence.

* Conditions apply, check our Limited Warranty at <https://martinsg.info/terms>

NOMENCLATURE

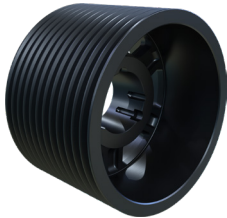
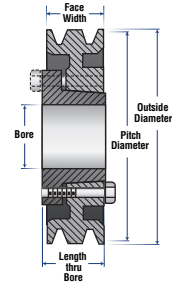
**High Capacity****QD****Conventional**

Number of Grooves **2 3V 220 JA 12 D 580 P** **Bushing**

Belt Selection **3V, 5V, 8V** **Pitch Diameter (1 decimal)**

Outside Diameter (2 decimals) **B (A/B), C, D**

Bushing **Number of Grooves**

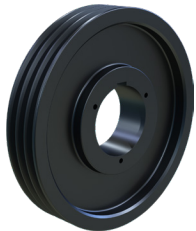
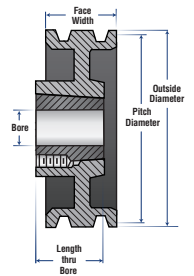
**High Capacity****TB****Conventional**

Number of Grooves **6 8V 1600 TB 1 B 34 TB** **Bushing**

Belt Selection **3V, 5V, 8V** **Pitch Diameter (1 decimal)**

Outside Diameter (2 decimals) **B (A/B), C, D**

Bushing **Number of Grooves**

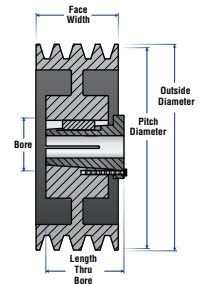
**High Capacity****MST®****Conventional**

Number of Grooves **1 3V 300 G 10 C 140 R** **Bushing**

Belt Selection **3V, 5V, 8V** **Pitch Diameter (1 decimal)**

Outside Diameter (2 decimals) **B (A/B), C, D**

Bushing **Number of Grooves**

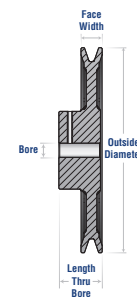
**Fractional Horse Power**

Number of Grooves **2 AK 104 G**
Blank for 1 Groove

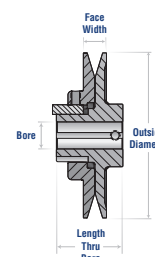
Belt Selection
AK 3L, 4L, A Section
BK 4L, 5L, A, B Section

Aproximate OD (1 decimal)

Bore or Bushing (bore in inches, H for MST)

**Variable Pitch**

1 VP 68 1 3/4 **Bore**
Aproximate OD (1 decimal)
Variable Pitch
Belt Sections: 3L, 4L, 5L, A, B, 5V
Number of Grooves





Phone: 817.258.3000

Fax: 817.258.3333

martinsprocket.com